

What's New

Rx version 9.09

Enhanced Gamut Monitoring

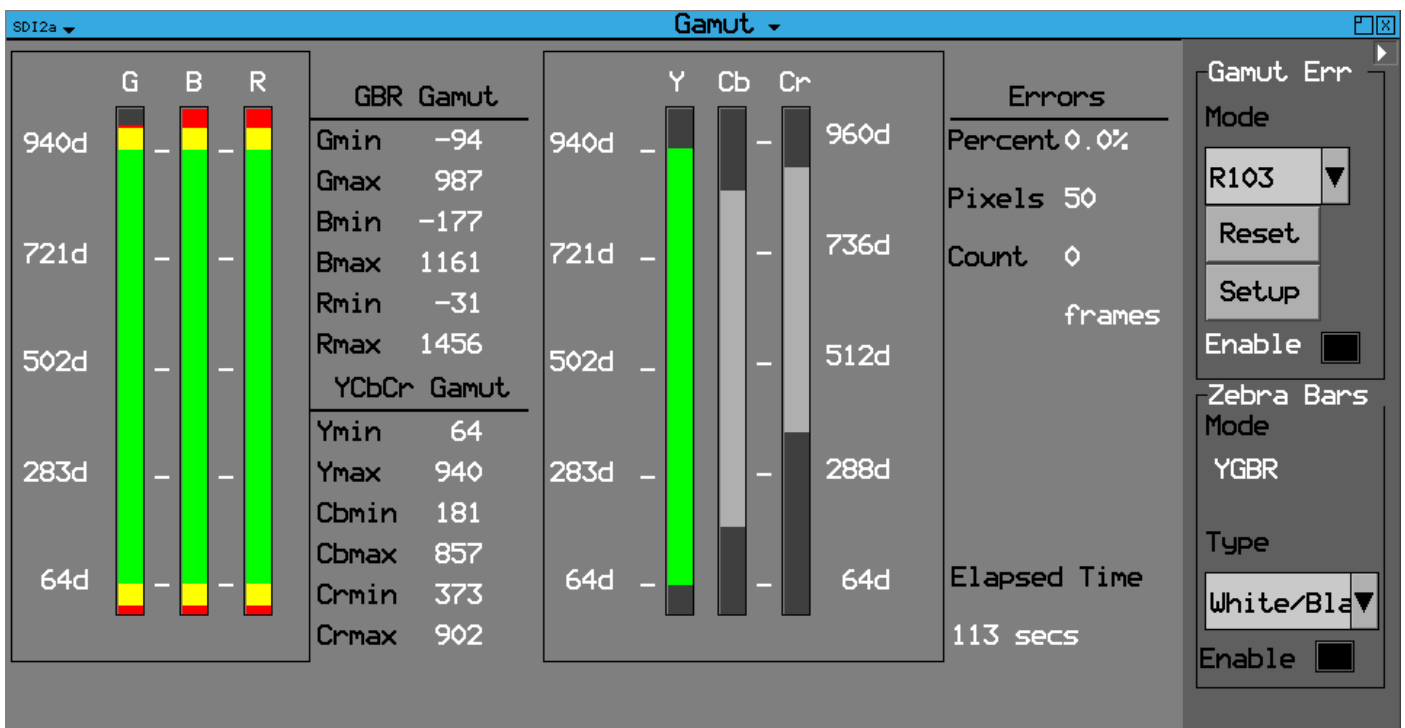
Incorporation of a new Analyzer instrument to monitor gamut values of the source video displayed in the Picture instrument. The Gamut monitor highlights gamut violations in the Picture instrument according to preconfigured EBU R103 or Legal standards, or using a combination of custom settings.

The Gamut instrument provides gamut monitoring meter bars for the YCbCr and GBR color spaces to enable pixel-level monitoring at both YCbCr / GBR levels simultaneously, regardless of the source format.

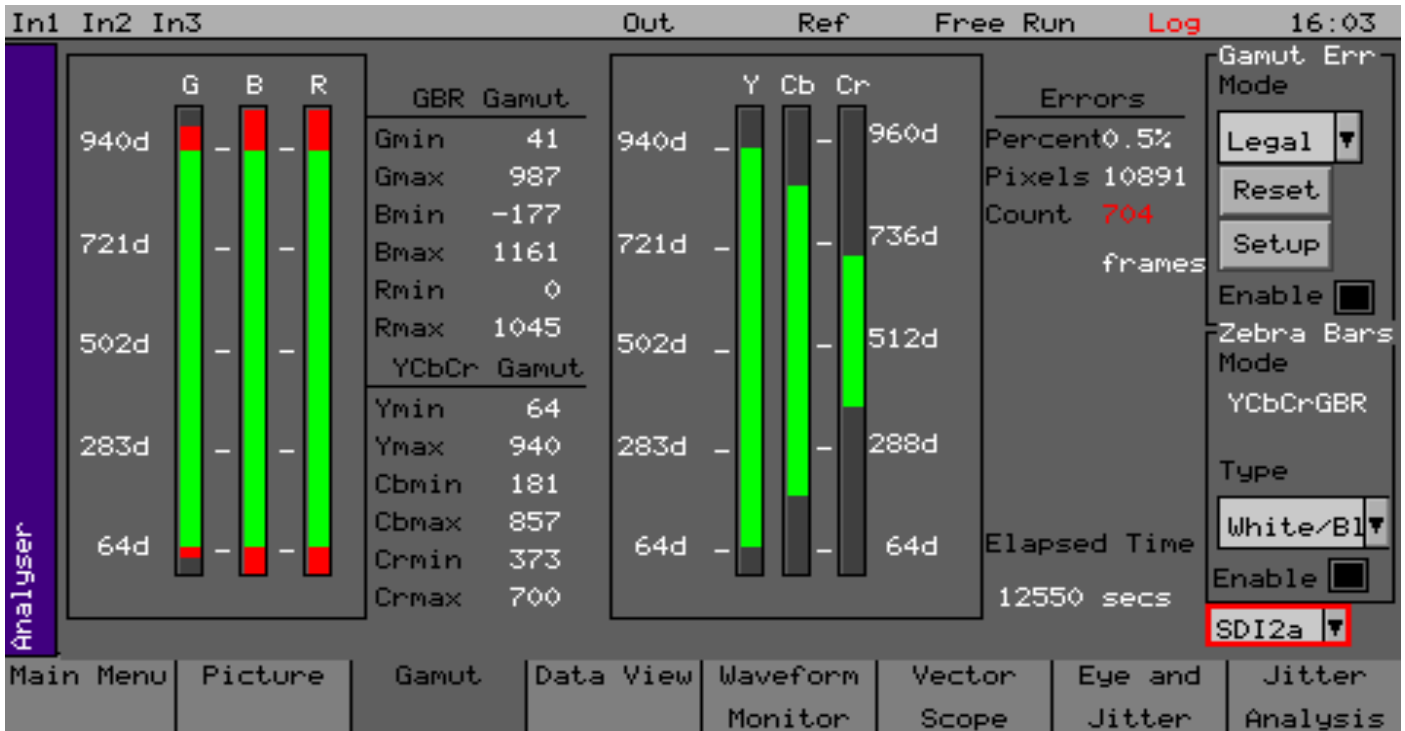
Gamut monitoring features include:

- One gamut monitor for each installed Analyzer module (maximum of four with Rx 1000 or Rx 2000)
- Red, amber and green gamut metering bars for GBR and YCbCr color spaces to indicate minimum and maximum gamut values in the active picture
- Preconfigured configurations for R103 and Legal standard gamut monitoring
- Customizable activation or deactivation of independent metering bars
- Active error counts, configurable to include or exclude specific color spaces
- Zebra mode overlay patterns to highlight areas of gamut violations in the active picture
- Monochrome mode available in Picture and Gamut instruments for improved clarity of red zebra patterns
- Selectable monitor scales: decimal, hexadecimal, millivolts, or percentage IRE
- Configurable low pass filter
- Gamut error logging on pixel count and configurable percentage of pixels in violation.

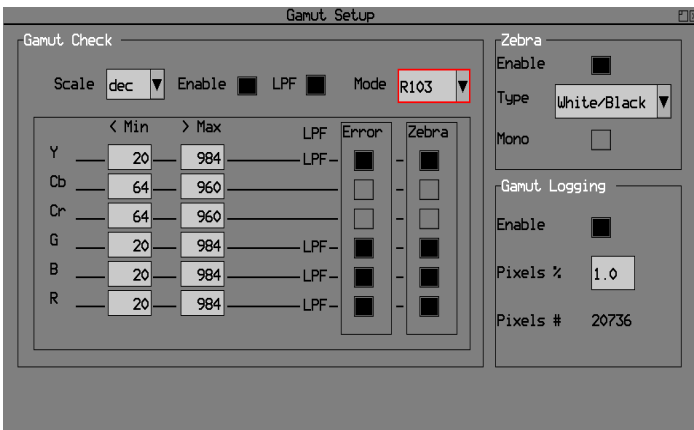
Gamut Monitor in EBU R103 Mode (HDMI Display)



Gamut Monitor in Legal Mode (Front Panel Display)



Flexible Gamut Configuration



- Include or exclude individual gamut meter bars from the error count.
- Activate or deactivate a low-pass filter either across all active meters for the selected mode or for specific meters.
- Define the current custom gamut mode configuration and save as preset, if required.
- Change the gamut metering scale.
- Setup Zebra overlay pattern (see below).
- Configure gamut error counts and logging.

- Select the target color space for the display of a zebra pattern overlay, from YCbCr or GBR, in the Picture display.
- Set the most visible pattern to highlight gamut violations in the source video from white/black, white/dim, red/black, or red/dim.
- Switch to monochrome mode for further visual contrast if required.

Zebra Overlay Applied (Red/Black & Mono)

