

What's New

Qx V3.3



The latest features in Qx V3.3 include the following capabilities to test and validate the quality of incoming video signals:



Suite of Quality Assurance Tools for Dual Picture Instruments

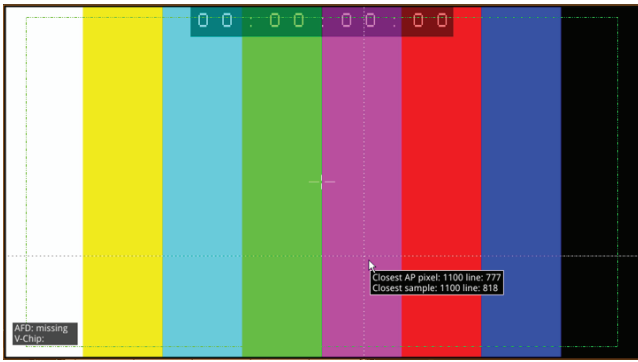
- Picture and Picture Copy Instruments enable side-by-side analysis.
- On-screen notification of presence or absence of Ancillary message types in the Message Center for SDI, ST 2022-6, or ST 2110-40 input.
- Decoding and on-screen Display in the Picture Instrument of 608 in 708 closed captions with multi-language support.
- Provision of 16:9 Graphics and Action, 4:3 Graphics, and User-customizable safe areas in the 16:9 Picture Instrument.

Dual Picture Windows Supporting CEA-608 in 708 Closed Captions



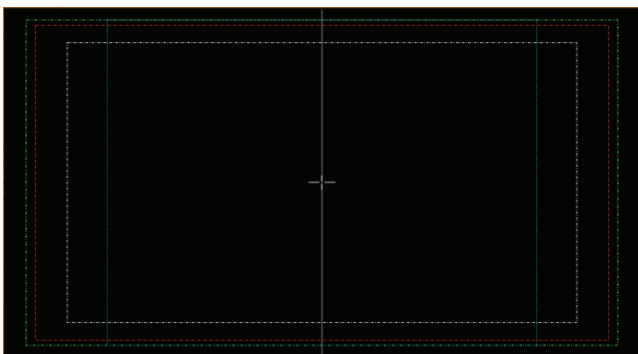
- Simultaneous display of a second Picture Instrument: Picture - Copy
- Decode and on-screen display in Picture Instrument of 608 in 708 closed captions with multi-language support, including:
 - Danish, English, Finnish, French, German, Italian, Portuguese, Spanish, Swedish
- Decode and on-screen display of OP47 closed captions with multi-language support, including:
 - Czech, English, Finnish, French, German, Hungarian, Italian, Portuguese, Slovakian, Spanish, Swedish
- Independent control in dual Picture Instruments of:
 - 608 in 708 field selection giving simultaneous display of two closed caption language sets
 - Message Centre selection and position
 - Safe Area selection
 - 16:9 Image Centre Crosshair
 - On screen display of OP-47 closed captions.

Message Center & Ancillary Data Decoding



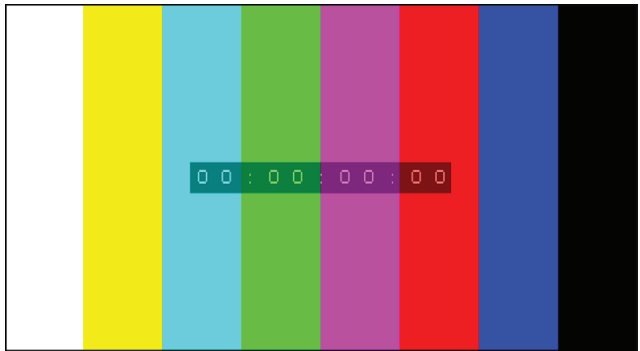
- On screen notification of presence or absence of the following message types in SDI, ST 2022-6 or ST 2110-40 input:
 - SMPTE ST 2010 SCTE 104 triggers with Hex or Decimal display
 - SMPTE ST 334-1 608-in-708 V-chip Program Rating Information
 - SMPTE ST 2016-3 Active Format Description codes (AFD)
- Real-time, cumulative display of SCTE 104 message type IDs with configurable timeout.

Picture Safe Areas



- 16:9 Graphics and Action safe areas
- 4:3 Graphics safe areas.
- User-customizable safe area in the 16:9 Picture Instrument.
- Color-coded borders for ease of identification.
- Optional display of crosshairs to mark the window center.
- Independent control of safe areas in dual Picture windows.

On-screen Ancillary Time Code (ATC) Display



- Decoding and on-screen display in the Picture Instrument of SMPTE S12M-2 Ancillary Time Code (ATC) for SDI, ST 2022-6 or ST 2110-40 input
- Re-sizable ATC code panel in small, medium and large render sizes.
- Adjustable position of timecode panel at top, middle or bottom of window.
- Notification of drop-frame, non-integer frame rates using semicolon separator.
- Optional final digit as field identification flag.